

PULL CYLINDERS



- ✓ Capacities from 10 to 50 ton, and 150 mm stroke.
- ✓ TE models are Spring Return.
- ✓ TD models are Double Acting.
- ✓ For pulling applications: to hook and join plates for welding, tensioning cables, etc.



Capacity		Stroke	Model	Oil Cap.	A
ton	kN	mm	LARZEP	cm ³	mm
10	93	150	TE01015	204	559
		150	TD01015	356	559
30	302	150	TE03015	660	723
		150	TD03015	954	723
50	483	150	TE05015	1.056	757
		150	TD05015	1.425	757

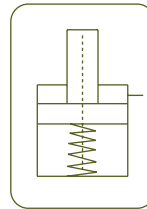


W - X

Single and Double Acting Hand Pumps



P.66

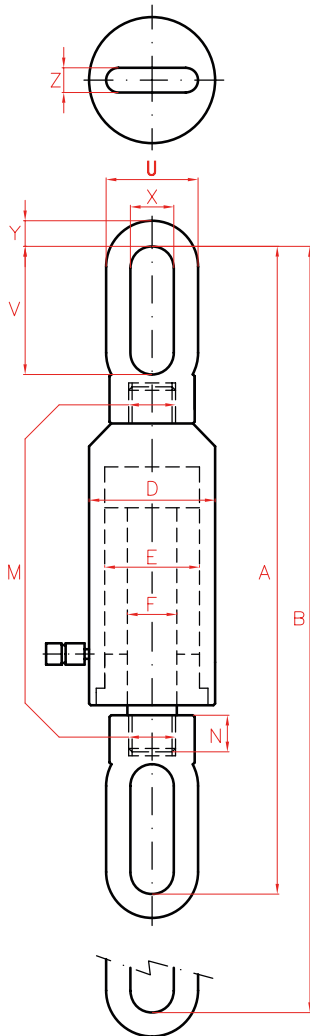


PULL CYLINDERS

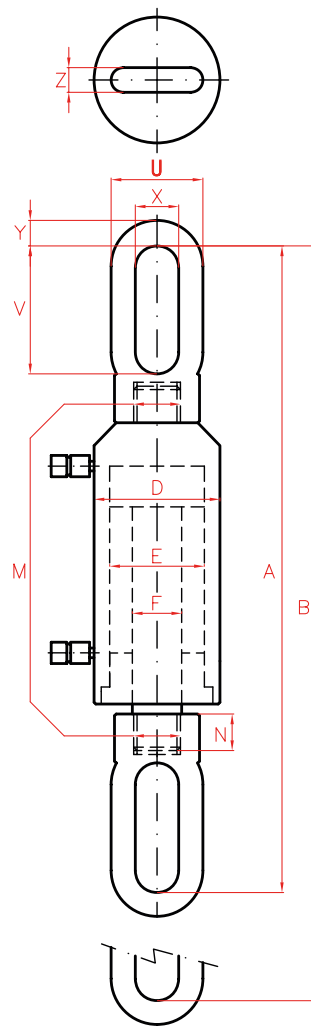


Type	TE - TD
Capacity	10 - 50 ton
Stroke	150 mm
Max. pressure	700 bar

TE - TD CYLINDERS



TE



TD

AP2
Hoses



P.84

AV - AT - AY
Pressure Gauges



P.94

	B	D	E	F	M	N	U	V	X	Y	Z	Area	Weight	Model
	mm	mm	mm	mm	mm	mm	mm	mm	mm	mm	mm	cm ²	kg	LARZEP
	709	86	55	36	M30x2	25	64	119	34	32	22	13,5	14,9	TE01015
	709	86	55	36	M30x2	25	64	119	34	32	22	13,5	14,9	TD01015
	873	125	90	50	M40x2	45	108	153	50	29	29	43,9	32,0	TE03015
	873	125	90	50	M40x2	45	108	153	50	29	29	43,9	32,0	TD03015
	907	148	110	56	M52x2	60	130	150	50	70	39	70,3	60,0	TE05015
	907	148	110	56	M52x2	60	130	150	50	70	39	70,3	60,0	TD05015