

## AIR DRIVEN HYDROTEST PUMPS



- ✓ 10 Models Available, from 70 bar to 2.900 bar.
- ✓ Engineered and designed for easy operation.
- ✓ Compact and lightweight steel frame for full protection and handling.
- ✓ Fully integrated, protected and calibrated pressure gauge.
- ✓ Clearly labelled controls for improved safety.
- ✓ Supplied with air inlet connector, air filter, air pressure regulator, air lubricator, air pressure gauge, air pressure limit valve, pump on/off control, oil pressure gauge.
- ✓ All pumps can work with water or oil.
- ✓ All pumps supplied complete with a full test certificate as standard.
- ✓ High pressure fittings and any length of high pressure hose available from stock.

Hydraulic Pressure Gauge: Dual scale bar/psi

Oil / Water Reservoir: 7 litres

Working Air Pressure: 1,7 to 6,9 bar

Air Inlet Port: 1/2" NPTF Female

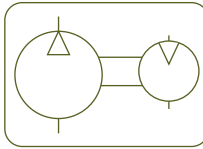
Air Consumption: 0,79 m<sup>3</sup>/min

Sound Level: 90 dBA

Weight: 30 kg



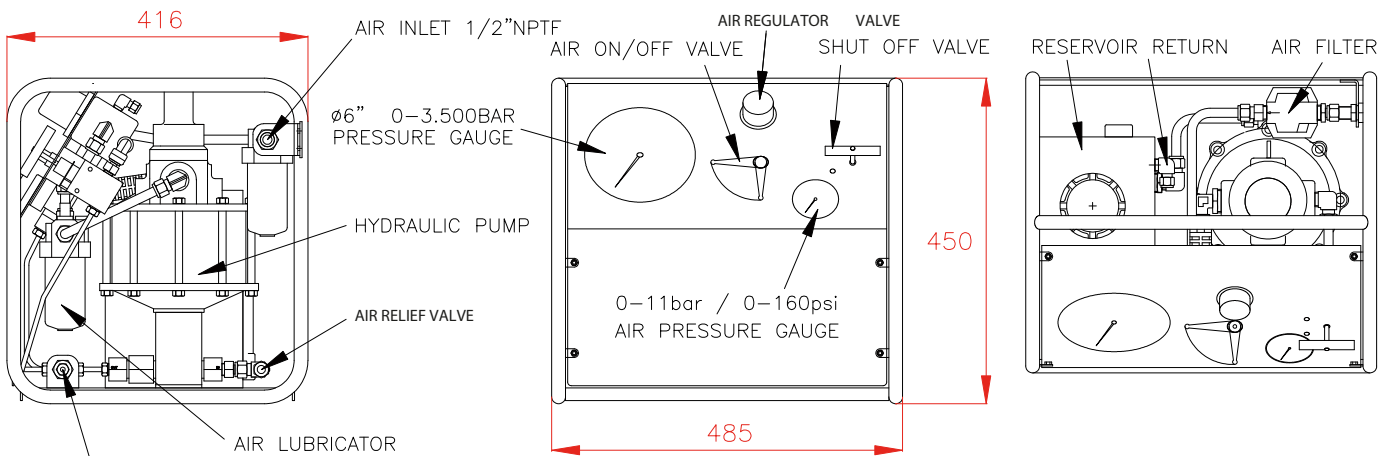
Options: **Chart recorders** Integral or free standing; Chart recorder pens and charts; Stroke counter; Stainless steel framework; External connection to liquid supply to increase available fluid during testing; USB connection for laptop including software.



Free standing Chart recorders:  
**HAPR19, HAPR28**



Type	<b>HAP</b>
Capacity	<b>7 litres</b>
Max. pressure	<b>70 - 2.900 bar</b>



OUTLET PORT\*

\* 3/8" NPTF FROM 70 TO 740 BAR

\* 9/16"-18UNF FROM 1300 TO 2900 BAR

**HYDROTEST PUMPS**

Hydrotest Pump	Maximum Hydraulic Pressure (bar)			Flow (l/min)			Outlet Port
	Air 6.9 bar	Air 5.1 bar	Air 4.1 bar	20% Max. P	50% Max. P	80% Max. P	
<b>LARZEP</b>							<b>Female</b>
<b>HAP0070</b>	70	55	40	16,2	11,0	3,7	3/8" NPT
<b>HAP0130</b>	130	100	80	8,5	6,0	3,9	3/8" NPT
<b>HAP0180</b>	180	150	100	6,1	4,7	2,6	3/8" NPT
<b>HAP0250</b>	250	200	150	4,1	3,1	2,0	3/8" NPT
<b>HAP0400</b>	400	320	240	2,6	1,8	1,2	3/8" NPT
<b>HAP0740</b>	740	600	440	1,2	0,9	0,6	3/8" NPT
<b>HAP1300</b>	1.300	1.000	770	0,65	0,5	0,3	9/16"-18UNF
<b>HAP1900</b>	1.900	1.500	1.100	0,4	0,3	0,2	9/16"-18UNF
<b>HAP2900</b>	2.900	2.300	1.800	0,25	0,2	0,1	9/16"-18UNF

**BOLT TENSIONER PUMP**

Bolt Tensioner Pump	Maximum Hydraulic Pressure (bar)			Flow (l/min)			Outlet Port
	Air 6.9 bar	Air 3.5 bar	Air 1.7 bar	20% Max. P	50% Max. P	80% Max. P	
<b>LARZEP</b>							<b>Coupler</b>
<b>HAP2900BT</b>	-	1.500	760	0,3	0,2	0,1	AZ3341