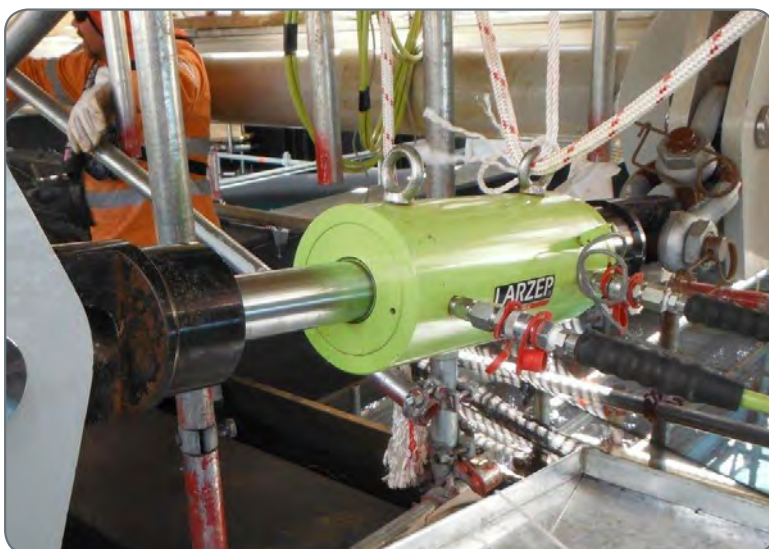


**PULL CYLINDERS**



- ✓ Capacity from 5 to 50 Tn, stroke up to 150 mm.
- ✓ T and TE models are Spring Return.
- ✓ TD models are Double Acting.
- ✓ For pulling applications: to hook and join plates for welding, tensioning cables, etc.



Capacity		Stroke	Model	Oil Cap.	A
Tn	kN	mm	LARZEP	cm <sup>3</sup>	mm
5	54	140	T00514/5G	110	306
		140	T00514/10G	110	306
10	93	140	T01015	190	308
		150	TE01015	204	576
30	302	150	TD01015	356	576
		150	TE03015	660	723
50	483	150	TD03015	954	723
		150	TE05015	1.056	757
		150	TD05015	1.425	757

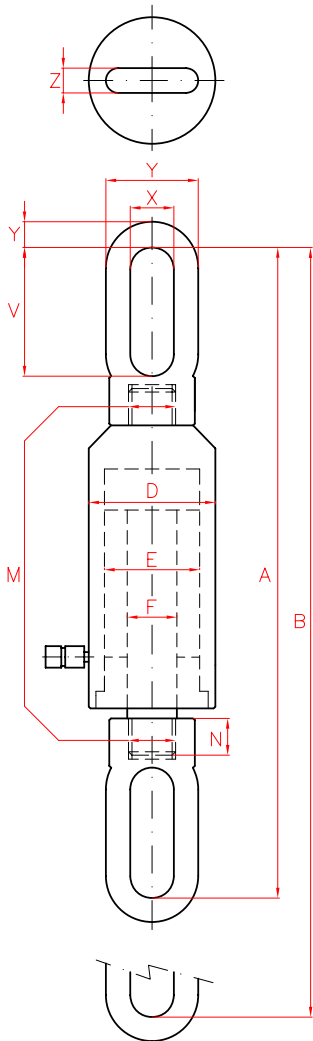
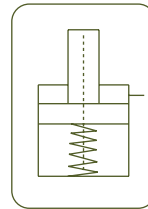


PULL CYLINDERS

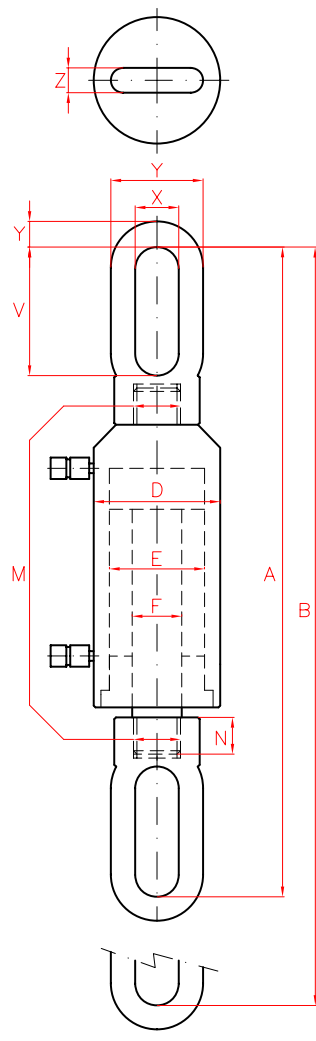


Type	<b>T - TE - TD</b>
Capacity	<b>5 - 50 Tn</b>
Stroke	<b>140 - 150 mm</b>
Max. pressure	<b>700 bar</b>

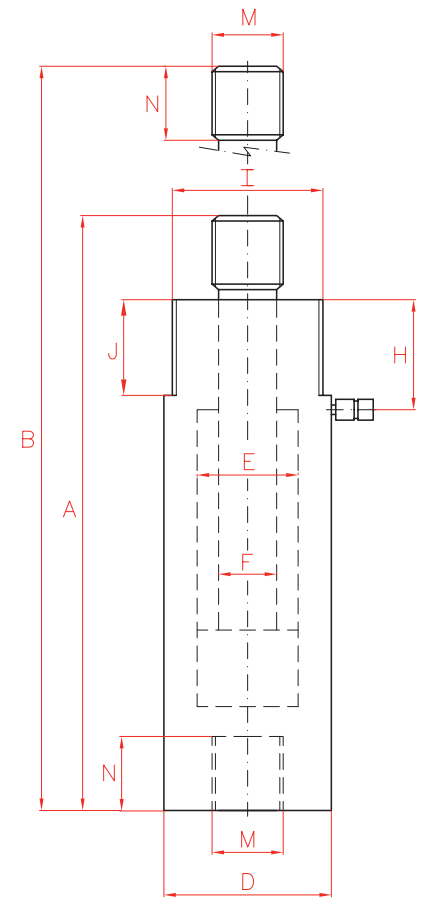
T - TE - TD CYLINDERS



TE



TD



T

	B	D	E	F	M	N	I	J	H	U	V	X	Y	Z	Area	Weight	Model
	mm	mm	mm	mm		mm	UN	mm	mm	mm	mm	mm	mm	mm	cm <sup>2</sup>	kg	LARZEP
	446	60	45	32	3/4" BSP	25	2 1/4" UNS	25	46	-	-	-	-	-	7,9	6,7	<b>T00514/5G</b>
	446	60	45	32	1 1/4" BSP	25	2 1/4" UNS	25	46	-	-	-	-	-	7,9	6,7	<b>T00514/10G</b>
	448	85	55	36	1 3/4" BSP	30	3 5/16" UNS	40	55	-	-	-	-	-	13,6	10,0	<b>T01015</b>
	726	86	55	36	M30x2	25	-	-	-	107	109	46	30,5	30,5	13,5	14,9	<b>TE01015</b>
	726	86	55	36	M30x2	25	-	-	-	107	109	46	30,5	30,5	13,5	14,9	<b>TD01015</b>
	873	125	90	50	M40x2	45	-	-	-	108	153	50	29	29	43,9	32,0	<b>TE03015</b>
	873	125	90	50	M40x2	45	-	-	-	108	153	50	29	29	43,9	32,0	<b>TD03015</b>
	907	148	110	56	M52x2	60	-	-	-	130	150	50	70	39	70,3	60,0	<b>TE05015</b>
	907	148	110	56	M52x2	60	-	-	-	130	150	50	70	39	70,3	60,0	<b>TD05015</b>